



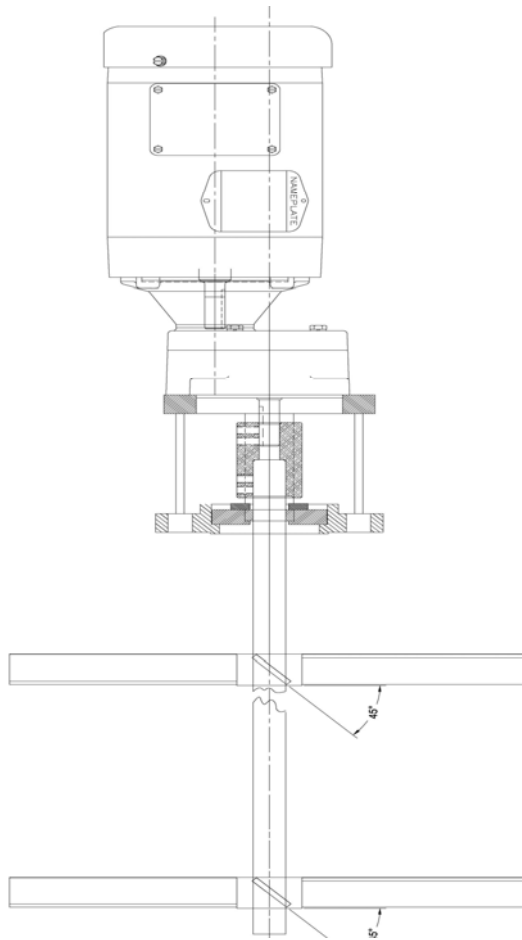
**FAWCETT**  
MIXING EQUIPMENT SPECIALISTS

# SANITARY FLANGE MOUNT MIXER

## OWNERS MANUAL

### Warranty:

Our products are guaranteed against defective materials and workmanship. We will repair or replace such items as may prove defective at our option. Warranty period is one year on items manufactured by FAWCETT. On items not manufactured by FAWCETT, the manufacturer's warranty applies. All component parts of our products are covered by this warranty, except for normal wear items such as impellers. We cannot be responsible for damage or abuse to equipment caused by improper installation or operation. Warranties can also be voided by unauthorized disassembly of equipment. For warranty repairs, equipment is returned to FAWCETT at the customer's expense; we will repair and return to customer at our expense. Under no circumstances will we allow labor charges or other expense to repair defective merchandise. This warranty is exclusive and is in lieu of all other warranties, whether expressed or implied. FAWCETT shall not be liable for any other damages, whether consequential, indirect, or incidental, arising from the sale or use of its products.



### FLANGE MOUNT MIXER

Contents:	Page:
Model – Drawing Data	2
Safety, General & Receiving	3
Installation	4
Operation / Maintenance	5/6
Parts Lists	7
Order Form	
Survey	

FAWCETT Co., Inc.  
3863 Congress Pkwy.  
Richfield, OH 44286  
phone: 330.659.4187  
fax: 330.659.6991

[www.fawcettco.com](http://www.fawcettco.com)



**SANITARY FLANGE MOUNT Series Mixers**

Model: EGD3.0 SFM 58/1T141T16

Serial No.: 2117907

Date: 12/02/2011

Order No.: L017222

**Motor:**

Part No.: VM3561

H.P.: 3.0 RPM: 1800/ 300 Reduced

Repair Kit #: N/A

**Shaft(s):**

Part #'s : SE-64 1" x 58"lg SS

\_\_\_\_\_

\_\_\_\_\_

\_\_\_\_\_

**Accessories:**

SS SAN FLANGE MOUNT

5:1 IN-LINE REDUCER

DUAL TEFLON SEALS

**Impellers:**

Part #'s : MF-140T 14" TURBINE BLADE (1)

MF-160T 16" TURBINE BLADE (1)

\_\_\_\_\_

\_\_\_\_\_

## **AC & DC Motor Installation Instructions**

These instructions are intended to complement (not replace) the information in MN400 Installation and Operation manual for “Integral Horsepower AC Induction Motors ODP, TEFC, Explosion Proof” and MN605 Installation and Operation manual for “Integral Horsepower DC Motors”.

### **Handling:**

The weight of the motor and shipping container will vary. Use correct material handling equipment to avoid injury.

Use caution when removing the motor from its packaging. Sharp corners may exist on motor shaft, motor key, sheet metal and other surfaces.

### **Receiving:**

The Motor shaft should rotate freely with no rubs. Report any damage immediately to the commercial carrier that delivered your mixer.

### **Safety Notice:**

Only qualified personnel trained in the safe installation and operation of this equipment should install this motor. When improperly installed or used, rotating equipment can cause serious or fatal injury. Equipment must be installed in accordance with the National Electrical Code (NEC), local codes and NEMA MG2 Safety Standards for Construction and Guide for Selection, Installation and Use of Electric Motors and Generators. Observe the following guidelines:

1. When eyebolts are provided, they must be fully tightened and are intended to lift the motor and its included accessories only.
2. Ground the motor according to NEC and local codes.
3. Provide a permanent guard to prevent accidental contact of body parts or clothing with rotating or moving parts or burns if motor is hot.
4. Shaft key must be secured before starting motor.
5. Do not apply power to the motor until the motor is securely mounted by its mounting holes.
6. This motor must only be connected to the proper line voltage, line frequency and load size.
7. Motors are not to be used for load holding or restraining unless a properly sized brake is installed. If a motor mounted brake is installed, provide proper safeguards for personnel in case of brake failure.
8. Disconnect all power services, stop the motor and allow it to cool before servicing.
9. For single phase motors, discharge the start and/or run capacitors before servicing.

10. Do not by-pass or render inoperative any safety device.

11. DC series wound motors must be protected from sudden loss of load causing overspeed damage. DC shunt wound motors must be protected from loss of field voltage which can result in damage.

12. When using AC motors with frequency inverters, be certain that the motors Maximum Speed Rating is not exceeded.

13. Mounting bolts should be high tensile steel. Be sure to use a suitable locking device on each bolt (spring washer or thread lock compound).

### **Motor Enclosure Information:**

**ODP, Open drip proof** motors are intended for use in clean, dry locations with adequate supply of cooling air. These motors should not be used in the presence of flammable or combustible materials. Open motors can emit flame and/or molten metal in the event of insulation failure.

**TEFC, Totally enclosed** motors are intended for use where moisture, dirt and/or corrosive materials are present in indoor and outdoor locations.

**Explosion proof motors**, as indicated by the Underwriters Laboratories, Inc. label are intended for use in hazardous areas as specified by the NEC.

### **Mounting:**

**Foot mounted** machines should be mounted to a rigid foundation to prevent excessive vibration. Shims may be used if location is uneven.

**Flange mounted** machines should be properly seated and aligned. Note: It improper rotation direction is detrimental to the load, check rotation direction prior to coupling the load to the motor shaft.

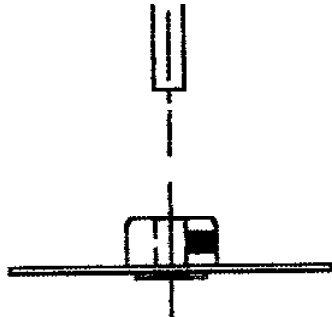
**Direct coupled** machines should be carefully aligned and the shaft should rotate freely without binding.

## Installation

Your new mixer is supplied partially assembled. For more information, see the parts list pages for general arrangement drawings.

### **Blades:**

To install the Turbine blades, back off the set screw as far as possible without removing them. Insert mixing shaft into the bore and tighten the set screw firmly to secure the Turbine blades to the shaft.



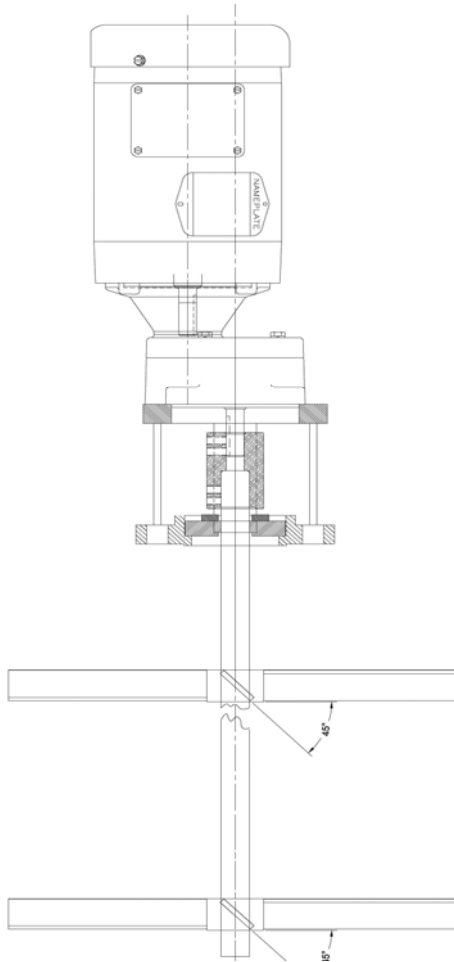
### **Blade Placement:**

Experimenting with Turbine blade placement will provide your best results.

### **Assembly:**

- 1.) Assemble mixing shaft to the coupling.
- 2.) Assemble the Turbine blades as described above.
- 3.) Assemble the mixer to the mixer lift bracket using bolt supplied.
- 4.) Adjust the mixer to the desired angle and tighten the bolt.
- 5.) Wire mixer in accordance with instructions on pages 2 & 3 of this manual.

Mixer is now ready to operate.



	<b>EGD3.0 SFM</b>		<b>DESCRIPTION</b>
<b>1</b>	VM3651		1800RPM, 3PH MOTOR
<b>2</b>	GCF5X02AB 5:1		5:1 GEAR REDUCER
<b>3</b>	3" SFM		MOUNTING BRACKET
<b>4</b>	C8x5		COUPLING
<b>5</b>	MF-140T		14" TURBINE BLADE
<b>6</b>	MF-160T		16" TURBINE BLADE
<b>7</b>	SE-51		SS SHAFT
<b>8</b>	9572K47		1" TEFLON SEAL
<b>9</b>			
<b>10</b>			



# FAX FEEDBACK SHEET

Our objective is to provide you the best products possible.

**You may help us by providing feedback to us.**

Please complete this survey and fax it back to us within 10 days.

Shipment No.: \_\_\_\_\_

Shipment Date: \_\_\_\_\_

Please circle your responses and FAX to (330) 659-6991

If you are RECEIVING or PURCHASING personnel, please answer the following:

- Was this shipment received within the timeframe established by your company? YES NO
- Did this shipment contain the correct items and quantity? YES NO
- Was the box damage free? YES NO
- Does the level of product quality meet your requirements and expectations? YES NO
- Are you aware of our website? [www.fawcettco.com](http://www.fawcettco.com) YES NO

If you are TECHNICAL personnel, please answer the following:

- Did you need to contact our Technical Support staff? YES NO
- If you did contact us, was our staff helpful and professional? YES NO
- Did you use the installation, programming and/or hookup instructions? YES NO
- Were the installation, programming and/or hookup instruction clear for you? YES NO

Completed By: \_\_\_\_\_ Your Function: \_\_\_\_\_

Company: \_\_\_\_\_

City, State, Zip: \_\_\_\_\_

Phone: \_\_\_\_\_

Email: \_\_\_\_\_

Thank you for helping us continually improve the products and services we provide you. For more detailed feedback, feel free to contact our Customer Service Personnel at (330) 659-4187 ext.2300 or via email at [sales.service@fawcettco.com](mailto:sales.service@fawcettco.com)

